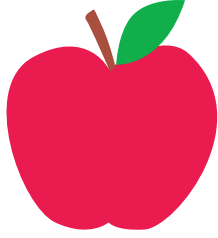


A a



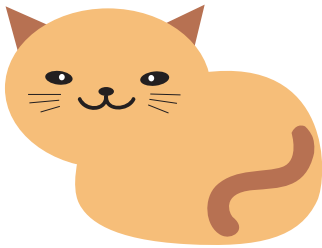
apple

B b



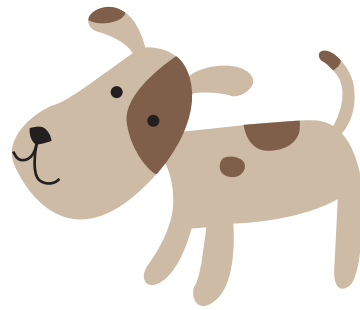
bee

C c



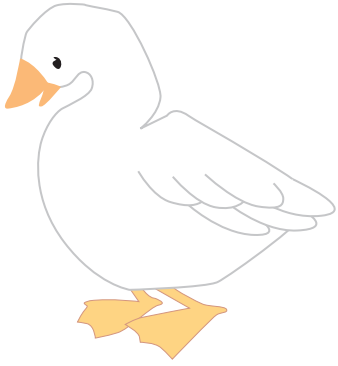
cat

D d



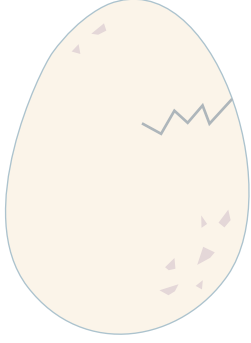
dog

G g



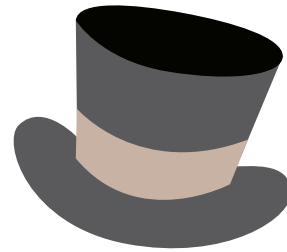
goose

E e



egg

H h



hat

F f

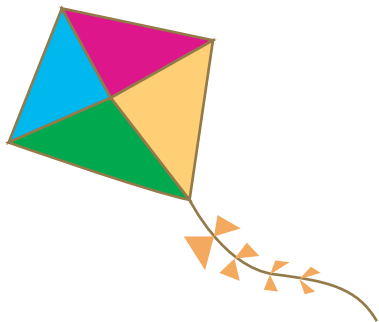


flower

I i



ice cream



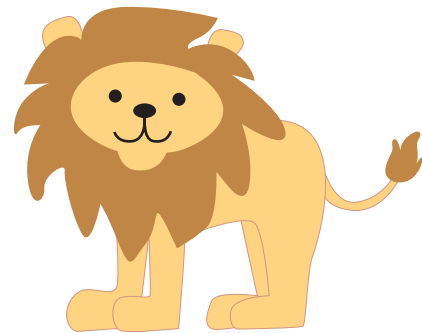
kite

J j



jewel

L l



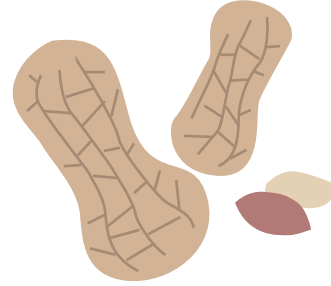
lion

Mm



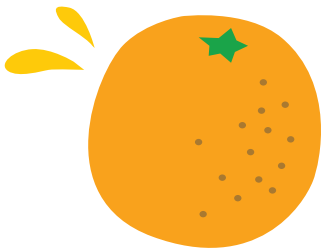
mouse

Nn



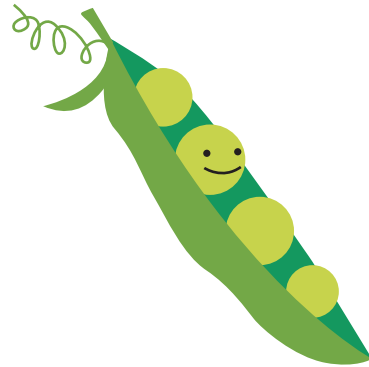
nut

Oo



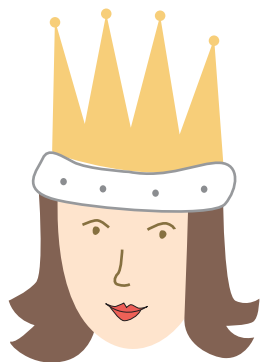
orange

Pp



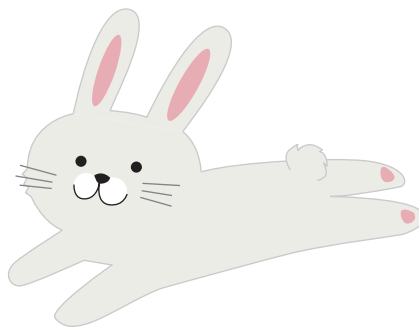
pea

Q q



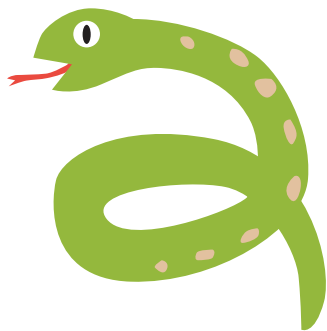
queen

R r



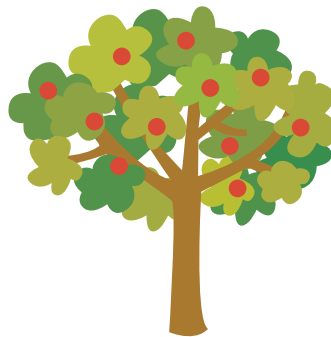
rabbit

S s



snake

T t



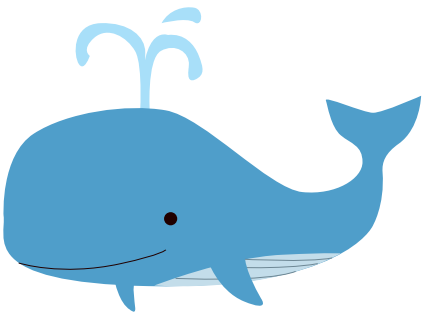
tree

U u



umbrella

W w



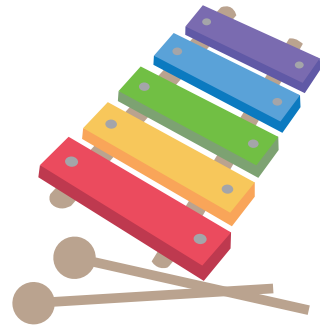
whale

V v



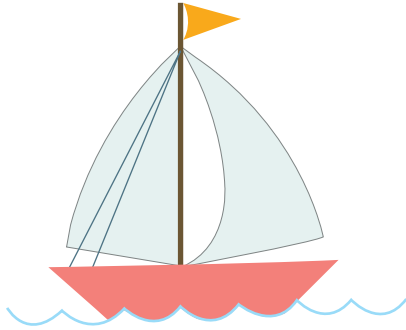
violin

X x



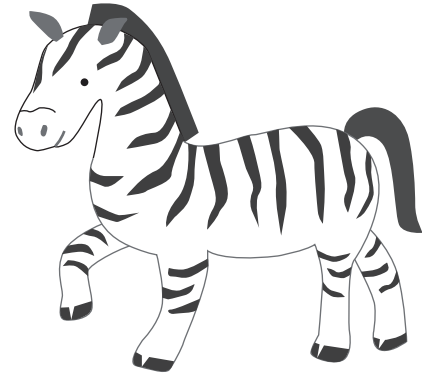
xylophone

Y y



yacht

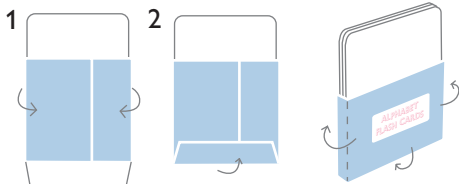
Z z



zebra

# ALPHABET

www.mrprintables.com



### TO MAKE THE CARD WALLET

Cut around the outline shape and score the dashed lines. Fold the three flaps backwards. Put the printed side face down and put all your cards together in the middle, wrap around the cards with the side flaps first and glue or tape them together at the back. Don't make it too tight so you can easily take the cards out and put them back in again. Wrap around the bottom flap and glue it to the back. Done!